

# ALL TIME HIGH

From the MGM/UA Motion Picture "OCTOPUSSY"



ALBERT R. BROCCOLI  
presents

**ROGER MOORE**

as IAN FLEMING'S

**JAMES BOND 007**

in

# OCTOPUSSY

Music by JOHN BARRY, Lyrics by TIM RICE  
Performed by RITA COOLIDGE on A&M RECORDS

CBS SONGS

Distributed by



T: \$ 150.50

Starring

**MAUD ADAMS, LOUIS JOURDAN, KRISTINA WAYBORN, KABIR BEDI, VIJAY AMRITRAJ**

Produced by

Directed by

Screen Story and Screenplay by

**ALBERT R. BROCCOLI JOHN GLEN GEORGE MacDONALD FRASER and RICHARD MAIBAUM & MICHAEL G. WILSON**

Theme song performed by

**RITA COOLIDGE**

Executive Producer

**MICHAEL G. WILSON**

Production Designer

**PETER LAMONT**

Associate Producer

**TOM PEVSNER**

Music by

**JOHN BARRY**

**PG PARENTAL GUIDANCE SUGGESTED**  
SOME MATERIAL MAY NOT BE SUITABLE FOR CHILDREN

**DOLBY STEREO**  
IN SELECTED THEATRES

**SOUNDTRACK AVAILABLE ON A&M RECORDS AND TAPES**

**95p**  
MUSIC SALES  
DIS MC ENTERTAINMENT CO.

© 1983 DANJAQ S.A. ALL RIGHTS RESERVED

From The MGM/UA Motion Picture "OCTOPUSSY"

## ALL TIME HIGH

Music by JOHN BARRY

Lyrics by TIM RICE

Moderately ♩ = 112

E(add 9)

The piano introduction consists of two staves. The right hand plays a melodic line starting with a quarter note E4, followed by eighth notes G4, A4, B4, and C5. The left hand provides a harmonic accompaniment with chords. The first measure features a chord diagram for E(add 9). The tempo is marked 'Moderately' with a quarter note equal to 112 beats per minute.

E

G#m

C#m

The vocal melody for the first line of lyrics is written on a single staff. It begins with a quarter note E4, followed by eighth notes G4, A4, B4, and C5. The melody continues with eighth notes D5, C5, B4, and A4.

1. All I want - ed was a sweet dis-trac - tion for an hour or two. —  
 2. I don't want — to waste a wak - ing mo - ment; I don't want to sleep. —

The piano accompaniment for the first line of lyrics consists of two staves. The right hand plays a melodic line that follows the vocal melody. The left hand provides a harmonic accompaniment with chords. The first measure features a chord diagram for E.

C#m/G#

A

G#

The vocal melody for the second line of lyrics is written on a single staff. It begins with a quarter note E4, followed by eighth notes G4, A4, B4, and C5. The melody continues with eighth notes D5, C5, B4, and A4.

Had no in - ten - tion to do the things we've done.  
 I'm in so strong and so deep, and so are you.

The piano accompaniment for the second line of lyrics consists of two staves. The right hand plays a melodic line that follows the vocal melody. The left hand provides a harmonic accompaniment with chords. The first measure features a chord diagram for C#m/G#.

E

G#m

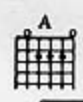
The vocal melody for the third line of lyrics is written on a single staff. It begins with a quarter note E4, followed by eighth notes G4, A4, B4, and C5. The melody continues with eighth notes D5, C5, B4, and A4.

Fun - ny how — it al - ways goes with love, — when you don't  
 In my time — I've said these words be - fore, — but now I

The piano accompaniment for the third line of lyrics consists of two staves. The right hand plays a melodic line that follows the vocal melody. The left hand provides a harmonic accompaniment with chords. The first measure features a chord diagram for E.

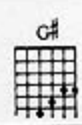
All Time High - 3 - 1  
 T2862APV

Not for commercial use - johnbarry.org.uk  
 © 1983 DANJAQ S.A.  
 All Rights Assigned to BLACKWOOD MUSIC INC. and UNITED LION MUSIC INC.  
 All Rights throughout the World controlled by BLACKWOOD MUSIC INC.  
 International Copyright Secured Made In U.S.A. All Rights Reserved

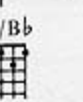
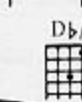
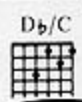
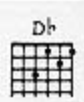
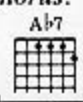


Musical staff with treble clef and key signature of two sharps (F# and C#). It contains the first line of the melody with lyrics: "look, you find. But then we're two of a kind, we move as re - a - lize my heart was tell - ing me lies, for you they're".

Piano accompaniment for the first system, including both treble and bass staves. The bass line features a steady eighth-note accompaniment.

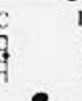
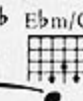
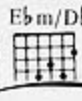
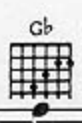


Chorus:



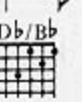
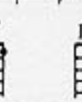
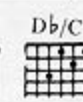
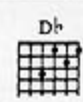
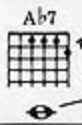
Musical staff with treble clef and key signature of two flats (Bb and F). It contains the second line of the melody with lyrics: "one. } We're an all time high, we'll change all that's true. }".

Piano accompaniment for the second system. The bass line includes a dynamic marking 'f' (forte) and some chromatic movement.



Musical staff with treble clef and key signature of two flats. It contains the third line of the melody with lyrics: "gone be - fore. Do - ing so much more than fall - ing in".

Piano accompaniment for the third system. The bass line continues with a consistent accompaniment pattern.



Musical staff with treble clef and key signature of two flats. It contains the fourth line of the melody with lyrics: "love. On an all time high, we'll take on the".

Piano accompaniment for the fourth system. The bass line features some sustained chords in the treble clef.

G $\flat$  Ebm9

world and wait. So hold on tight, let the flight be -

1. C $\flat$ 9 B7 2. C $\flat$ 9

gin. gin. So hold on

Ebm9 C $\flat$ 9

tight let the flight be - gin. We're an all time

D $\flat$

high.